

*Metal Competence*



ALUMERO METAL COMPONENTS



Metal Components



ALUMERO / POLAND

## Your big advantage!

*Increasing globalisation puts companies under more and more cost pressure. To continue to be economically successful despite changing conditions you need reliable and professional partners. ALUMERO Metal Components fulfils that requirement. Our services range from the machining of aluminium profiles on ultra-modern CNC equipment, to welding and punching, to the complete assembly of machined, finished components – all packaged to your exact specifications.*

*In addition, ALUMERO is an expert in the construction of window and façade elements. In partnership with leading cladding companies our workshops create structural elements and cladding for projects all over Europe.*

*ALUMERO sees itself not only as a parts supplier but also as an effective system provider. We offer an integrated, comprehensive service and production program centred around aluminium and metal.*

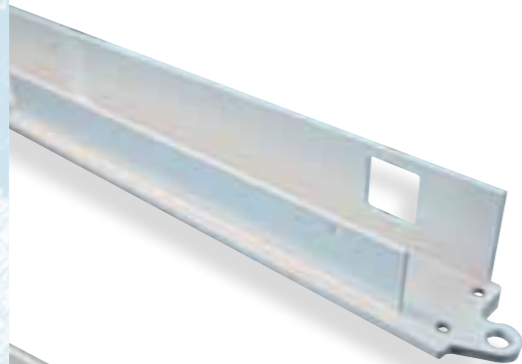
**„Successful together“  
ALUMERO – your extended workbench**

- + In-house consulting and design office
- + Production of in-house and external designs
- + Professional machinery
- + Competent technical staff
- + Innovative production methods
- + Flexible, efficient manufacturing
- + Single-source project coordination
- + Assembly of in-house and other products
- + High standards for surfaces and manufacturing quality
- + Professional German- and English-speaking contacts



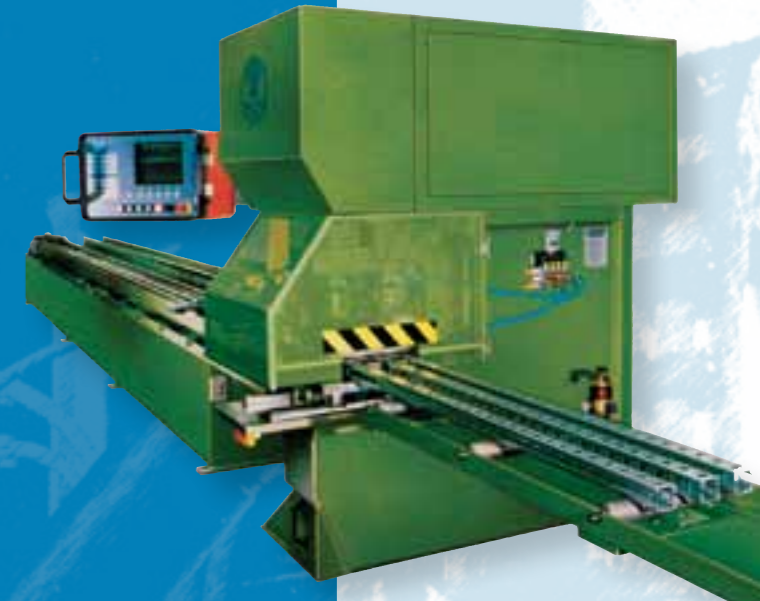
## CNC Profile Machining

Machining takes place in our ultra-modern CNC profile processing centres. In addition to precision saws, automated saws, copy milling machines and coping machines we offer a wide range of other specialized equipment, for example machines for flow drilling. ALUMERO thus offers optimal conditions for flexible and efficient production. We are able to meet the most stringent requirements for surface finishes and processing quality.



## CNC Profile Punching Technology

Our "Edel" Profilmatic provides us with a flexible, high-performance punching centre with linear feed for the machining of precision profiles. The fully automated positioning system processes tubing and bars at a cutting pressure of 500 kN. The use of eccentric and hydraulic presses and of in-line punches provides a solid base for the cost-effective production of everything from small batch series to mass-produced items.



## CNC Sheet Metal Forming

Precise, fully automated punching and forming on our CNC sheet metal working centres, combined with a modern power brake and a folding machine, ensure high-quality sheet metal forming. Edging and deburring machines round out our production capabilities.

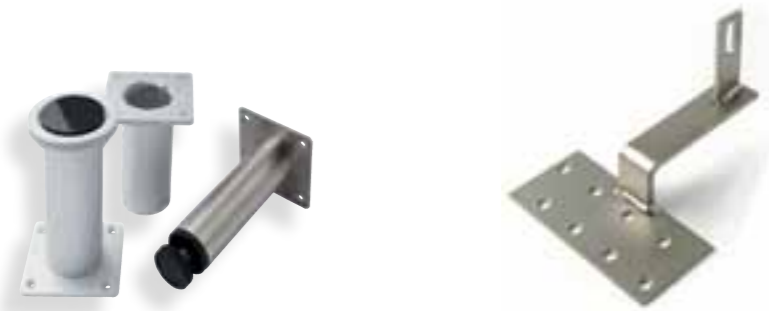
Our specialists manufacture small, medium and large batches for industrial use and for the building industry. Our production offerings include high-quality bent, punched, stamped, and deep-drawn components as well as sheet metal and composite sheet panels, cladding and coffer used in construction.



## Welding Technology



Our team of qualified specialists carries out difficult tasks at high quality levels under the guidance of a welding engineer. The following methods can be used, as required by your product: MIG/MAG, TIG, gas welding, brazing, stud welding, plasma cutting and electropassivation. A special area of expertise is the welding of aluminium and stainless steel.



## Component Manufacture



ALUMERO offers complete solutions, whether you need job order production or ready-to-assemble or fully assembled components. From machining parts on ultra-modern CNC equipment to assembling machined, finished parts – optimally packaged to your specifications – ALUMERO can do it all in one place.

We're also able to handle all logistics, including sourcing of materials.



## Windows, Doors and Cladding



## For Perfect Results

Creating individual solutions in close cooperation with our clients is our mission and our obligation. From idea to draft to design to the finished product, we always use our knowledge to your advantage.

The analysis of each manufactured part, accompanied by our quality management system, leads to a precise and cost-effective production of your workpieces. We use logiKal to create bills of lading, optimised cutting patterns and component drawings. Shop drawings and installation plans are designed on AutoCAD.

To guarantee long-term process reliability we use mainly cutting-edge NC or CNC equipment.

The systematic application of manufacturing aids and the availability of tools and jigs created in-house for the manufacture of punching tools, templates and assembly tools ensure continued quality and lasting success.

- Window, door and cladding elements (all well-known systems)
- Aluminium composite panels
- Sun protection systems
- Welded designs
- Fabricated steel sheet structures – edging parts
- Small steel parts (blades, consoles)



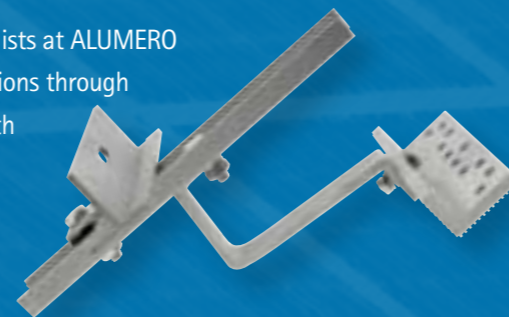
## Mounting Technology – Photovoltaics and Solar



### ALUMERO – Your OEM Subcontractor

We're your OEM subcontractor for all all mounting profiles, components, fastening systems, laminate clamps and module and collector frames for photovoltaic and solar systems.

No matter what the goal, the project specialists at ALUMERO can guarantee the most cost-effective solutions through expert advice and a continuous dialogue with the client.

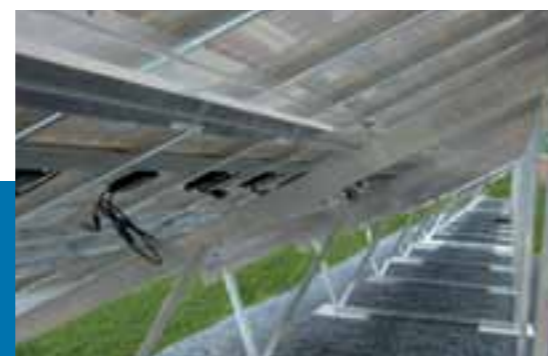


## Aluminium and Glass Noise Protection Elements



Constant noise impairs our well-being and our health. New residential areas, even entire business or industrial parks often develop within a few years. Expanded access roads add to the appeal. Those living along the thoroughfares often fall by the wayside.

We manufacture state-of-the-art noise protection walls that meet the highest technical requirements. Different types of aluminium panels, transparent glass and plantable elements and sophisticated hybrid designs offer enormous variety and fit into any type of landscape.



## Quality Creates Trust

ALUMERO's quality management program safeguards the company's professionalism and international reliability now and for the future. Within the company, our reliable "Systematic Solutions" program provides the basis for successful project management.

Durable quality is thus the result of a well-thought-out company philosophy, backed by ISO 9001:2008 standards.

Modern quality management according to EN-ISO 9001:2008 standards

High-quality delivered products guarantee our success

Trained RAL quality inspectors

Customer-oriented quality agreements

Quality Management as an active and dynamic process

TQM from planning to purchasing to shipping



TQM from planning to execution



Ascona – digital profile measurement projector



Faro measuring arm, coordinate measuring machine (CMM)

### ALUMERO Plant, Poland

Alumero Metal Components Sp. z o.o  
Polska, Ul. Kluczborska 29,  
41-508 Chorzów  
Tel.: +48 (0) 32 / 34 617 60  
Fax: +48 (0) 32 / 34 617 70  
E-mail: [alumero@alumero.pl](mailto:alumero@alumero.pl)



### ALUMERO Headquarters

Alumero Systematic Solutions GmbH  
Austria, 5164 Seeham, Rosenweg 22  
Tel.: +43 (0) 6217 / 68 41-0  
Fax: +43 (0) 6217 / 68 41-41  
E-mail: [alumero@alumero.at](mailto:alumero@alumero.at)  
[www.alumero.at](http://www.alumero.at)



### ALUMERO Plant, Netherlands

ALUMERO FINEX extrusions B.V.  
Nederland, Duizeldonksestraat 20,  
5705 CA Helmond  
Tel.: +31 (0) 492 / 59 85 10  
Fax: +31 (0) 492 / 59 85 28  
E-mail: [alumero@alumero.nl](mailto:alumero@alumero.nl)



# ALUMERO

[www.alumero.pl](http://www.alumero.pl)